

MAXIMIZE CAPACITY IN BEAN PROCESSING

INNOVATIVE TECHNOLOGY FOR MORE EFFICIENT OPERATIONS

Retrofit solutions for increased capacity

Solex Bean Heater Modules allow for additional capacity in existing units without elaborate and expensive retrofits to replace outdated and run-down tube sections.

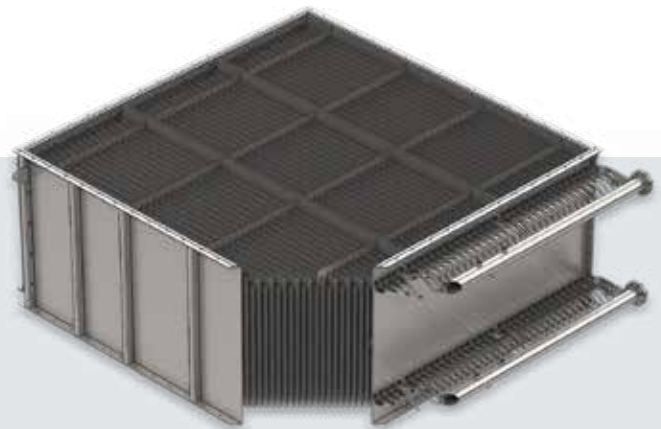
The Solex advantage

Increased capacity and performance: The plate modules increase the available heat transfer area in the same volume by a factor of two.

Efficient heat recovery: The ultra-efficient plate technology allows for improved heat recovery from condensate and hot water, even at a low flow rate and temperature.

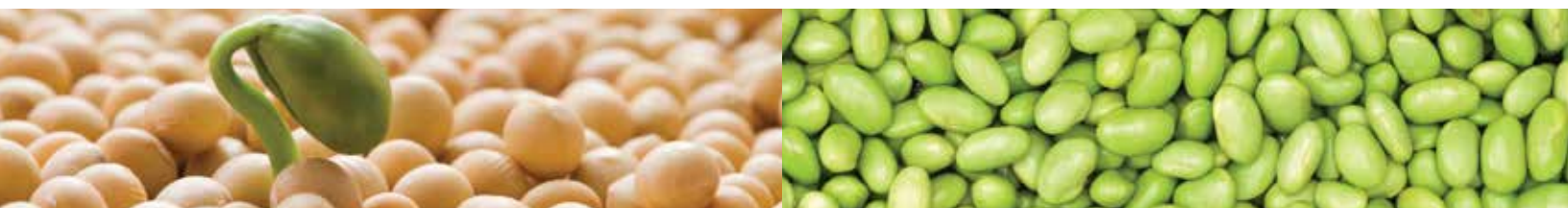
Low CAPEX: The replacement modules provide increased performance and the added benefits of low installation cost and reduced downtime.

Simple and easy installation: No layout, piping or plant changes required for a replacement module.



Higher thermal performance

The innovative plate design doubles the heat transfer area in the same volume compared to tubes. The compact design allows plants to increase capacity by adding heat transfer area in the same volume and footprint. This can be achieved either by adding additional modules on top of the existing system or replacing modules that have worn out. The plate design also allows for a wider range of choice of heating media, including steam, condensate or hot water. The plant can enhance total thermal duty of the unit by switching to higher steam pressure.



PROPRIETARY TECHNOLOGY THAT INCREASES PRODUCTION CAPACITY

Efficient solutions

The ever-changing demand for improved energy efficiency and reduced energy consumption can now be met by a simple, efficient and cost-effective solution.

Energy recovery simplified

The innovative design of the Solex Bean Heater Modules allow for optimized use of low-grade energy, and helps plants achieve targets for reduced steam consumption.

Flow channel design

The versatile design of the flow channels between the plates allows low volumes of condensate or hot-water that is otherwise wasted to be effectively used for recovery energy.

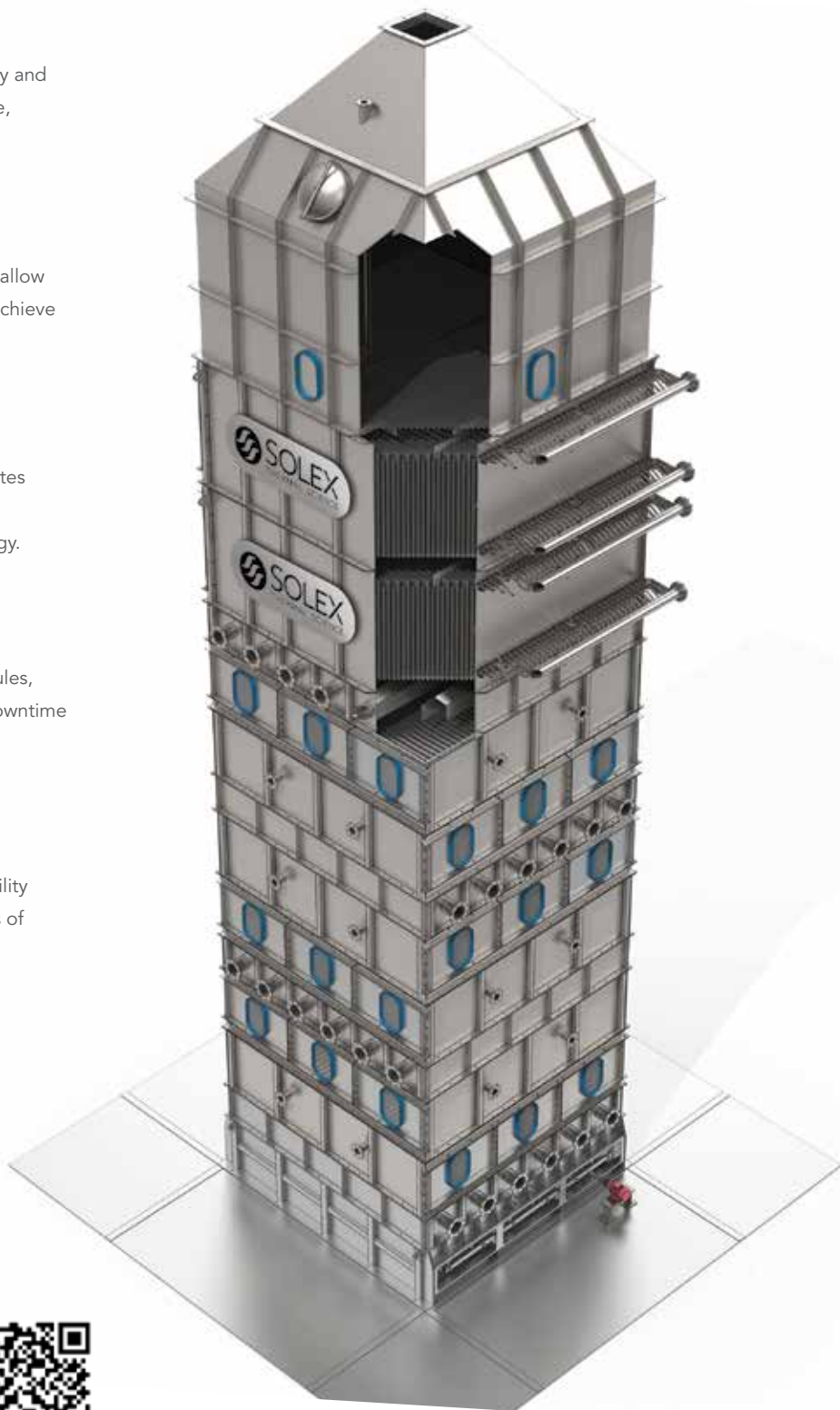
Long-lasting benefits

The robust and proven design of Solex Bean Heater Modules, based on patented heat transfer technology, decreases downtime and money spent on repairs and replacements.

Flexibility in operations

Solex Bean Heater Modules provide a wide range of flexibility in operation, especially when it comes to the various forms of thermal energy sources that can be used in combination:

- Steam at high pressure
- Condensate, even at low flow rates
- Glycol or other media
- Hot water from energy loops



Solex Thermal Science Inc.
250, 4720 — 106 Ave. S.E.
Calgary, AB, Canada T2C 3G5
Tel: +1 403 254 3500
Fax: +1 403 254 3501
www.solexthermal.com

